

# JANUS REMOTE COMMUNICATIONS

## T3X Series Modem Terminal

### Description

The T3X is a low cost cellular terminal incorporating a Janus XF footprint modem in a compact, rugged aluminum enclosure. Powered by a nominal 12 VDC and offering USB and Serial connectivity, the T3X allows for easy integration into any M2M/IoT application. Incorporating carrier certified Janus Plug-in Modems, the T3X provides a hardware solution with direct access to the cellular network of your choice: LTE Cat 1 or Cat M. External connectors allow the customer to choose the precise antenna for their application needs. The T3X was specifically designed to provide customers with a low cost method of globally retrieving critical data from remote equipment and applications.

### Applications

All remote equipment and application monitoring solutions

- Fleet management
- Teleservice
- Security systems
- Telematics
- Telemetry and telecontrol
- Remote monitoring systems
- Remote meter reading
- Vending machines
- POS Terminals



### Features

- Utilizes Socket Modem devices to allow multiple technologies.
  - LTE Cat 1 or Cat M
- Rugged aluminum enclosure with mounting slots
- Dimensions: 5.21" x 2.35" x 1.18"
- Operating Temperature Range : -40°C to 85°C
- Operating Voltage: 12 VDC nominal
- User Interfaces
  - RS-232 9-pin Sub D
  - USB B Female
  - Power terminal connector (4 position)
  - I/O terminal connector (10 position)
  - Cellular Antenna (SMA)
  - Cellular Rx Diversity (SMA)
  - GPS Antenna (SMA)
  - POWER and cellular STATUS indicators

2359 Diehl Road  
Aurora, IL 60505  
**630.499.2121**  
info@janus-rc.com  
www.janus-rc.com

## Specifications

### Environmental

- Operating Temperature: -40°C to 85°C

### Physical Interfaces

- Connectors
  - RS-232 9-pin Sub D
  - 4 Position 2.5mm Power Header
  - 10 Position 2.5mm I/O Header
  - Cellular Antenna Jack (SMA)
  - Cellular Rx Diversity (SMA)
  - GPS Antenna Jack (MCX)

### Enclosure

- Rugged Aluminum
- 5.21" x 2.35" x 1.18"
- Mounting flanges

### Performance

- Operating Voltage:
  - 5 to 35 Vdc, 12 Vdc nominal
- Data Interfaces
  - TCP
  - UDP
  - PPP
  - AT commands

### AT Command Set

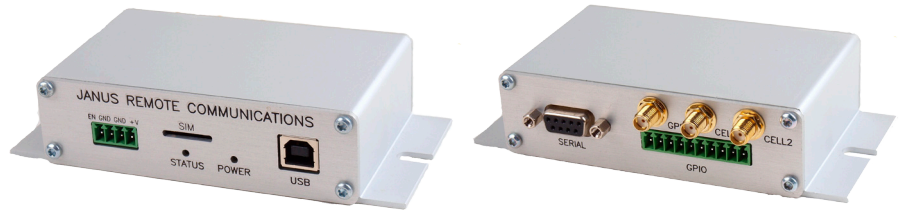
- Hayes standard AT command set
- Telit proprietary commands

### Approvals – Certifications

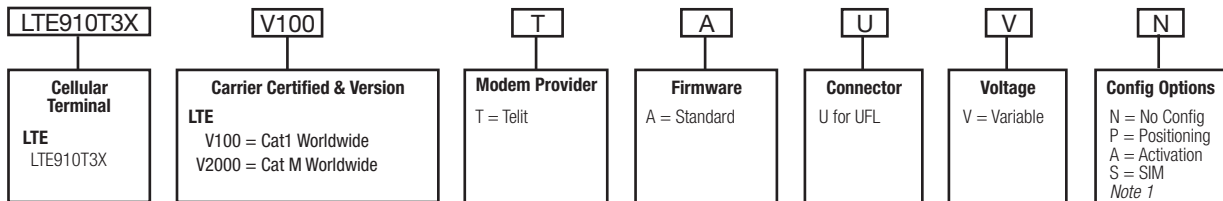
- AT&T & Verizon
- RED (Cat M modem)

### GPS Receiver

- GPS, Galileo, GLONASS, Beidou, QZSS
- NMEA Data
- GPS fix on demand
- Dedicated GPS antenna connection for optimal GPS performance with active antenna support



## Ordering Information



Example: Part Number – LTE910T3XV100TAUVN =

LTE Intelligent Cellular Terminal; CAT1 Worldwide Certified; Telit Modem; Standard Firmware; UFL Connector; Variable Voltage; Standard Config

Contact Sales for Additional Special Order Options: Bill Borton: [bborton@janus-rc.com](mailto:bborton@janus-rc.com) | 630-499-2121

#### Notes:

1. *Config Options: Provisioning is turning on a device on the network. Activation is assigning MEID's to a customer account. SIM designation is for installation of the SIM*

## Revision History

Revision	Revision Date	Note
00	12/5/23	Initial Release
01	12/19/23	Updated Voltage



Division of The Connor-Winfield Corporation

2359 Diehl Road • Aurora, IL 60505

630.499.2121 • [info@janus-rc.com](mailto:info@janus-rc.com)

[www.janus-rc.com](http://www.janus-rc.com)

© Copyright 2023 Janus Remote Communications. All Rights Reserved

*Specifications subject to change without notice*

See website for latest revision. Not intended for life support applications.